

WEST VALLEY MOSQUITO AND VECTOR CONTROL

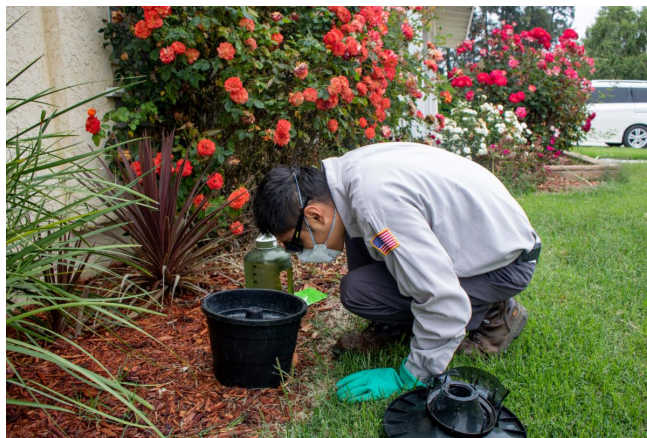


The Valley Buzz!

In2Care Traps and IPM

You may have heard of the “buckets” that the West Valley Mosquito and Vector Control have been putting out at homes. These are called In2Care traps and are a part of our Integrated Pest Management strategy. In2Care traps are a treatment method used to reduce the number of *Aedes* mosquitoes. These traps are set and maintained on a monthly basis by our technicians in an effort to reduce the population of invasive mosquitoes.

Our process begins with a property inspection. After an inspection, our trained and certified technicians can determine the next best steps to help residents, including possibly placing a trap if conditions are right. So, if you're troubled with mosquitoes call us today to get an inspection!



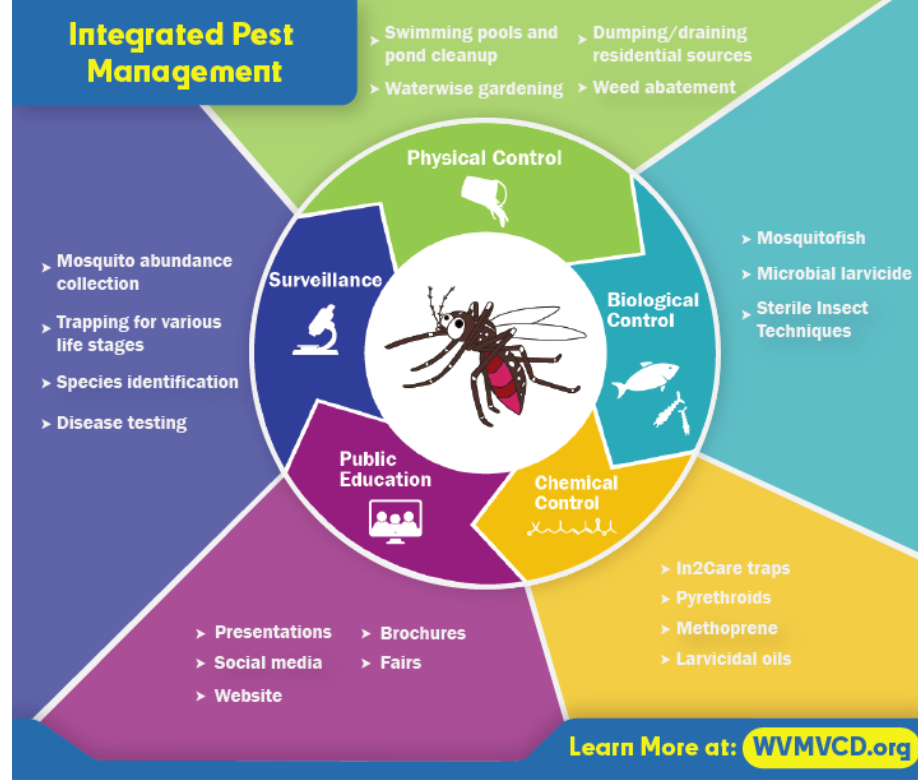
(Left) Our Technician sets an In2Care Trap. (Right) Our trained staff are experts at finding hidden sources like this!

Integrated Pest Management: Minimizing Risk and Maximizing Effectiveness

The tactics used by vector control today to manage mosquitoes are the culmination of years of scientific research and practical application to maximize effectiveness and minimize environmental impact.

Collectively, we call this approach Integrated Pest Management (IPM). IPM focuses on the immature stages of mosquitoes, where they are confined to a water source. Targeting mosquitoes before they can fly and removing potential breeding sources reduces the risk of disease transmission and keeps mosquitoes from replenishing. One of the great things about IPM is that residents can use some of these techniques on their own!

Look for standing water, especially small sources like potted plant saucers and buckets and scrub the sides before rinsing and dumping. Removing sources can greatly reduce mosquitoes around your home!



Integrated Pest Management is a multi-pronged approach to mosquito control that focuses on reducing mosquitoes in the immature stages and permanently reducing breeding sources.

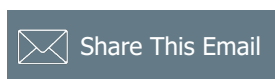
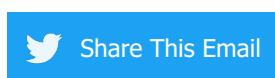
Repellents: an Integral Piece to Reducing Your Risk of Bites

Invasive *Aedes* are relentless! They can sense you from 2-3 hundred yards away, will follow you and often bite several times. One of the best ways to keep these aggressive mosquitoes from biting is to use a CDC recommended repellent.

Repellents with the active ingredients DEET, Picaridin, Oil of Lemon Eucalyptus and IR3535 are the most tested and longest lasting available. Not all repellents work well for all people, so you may have to try several different active ingredients and/or formulations to find what works best for you. Mosquitoes will be out searching for you, so whatever you choose to use, be sure to use it!



Mosquito repellents come in many different formulations and application methods. Try different ones to find what works best for you.





Try email marketing for free today!